

March 30, 2026



The University of Texas at Austin
Dell Medical School

TCMHCC Integration Across Clinical Programs

Executive Committee Meeting

Young Shin Kim, M.D., Ph.D.

Division Chief,
Child and Adolescent Psychiatry
Department of Psychiatry and Behavioral Sciences
Executive Director,
Texas Child Mental Health Clinical and Workforce Programs,
The University of Texas at Austin, Dell Medical School

Nithya Mani, M.D.

Assistant Professor,
Department of Psychiatry and Behavioral Sciences
Director of Pediatric Public Psychiatry,
The University of Texas at Austin, Dell Medical School



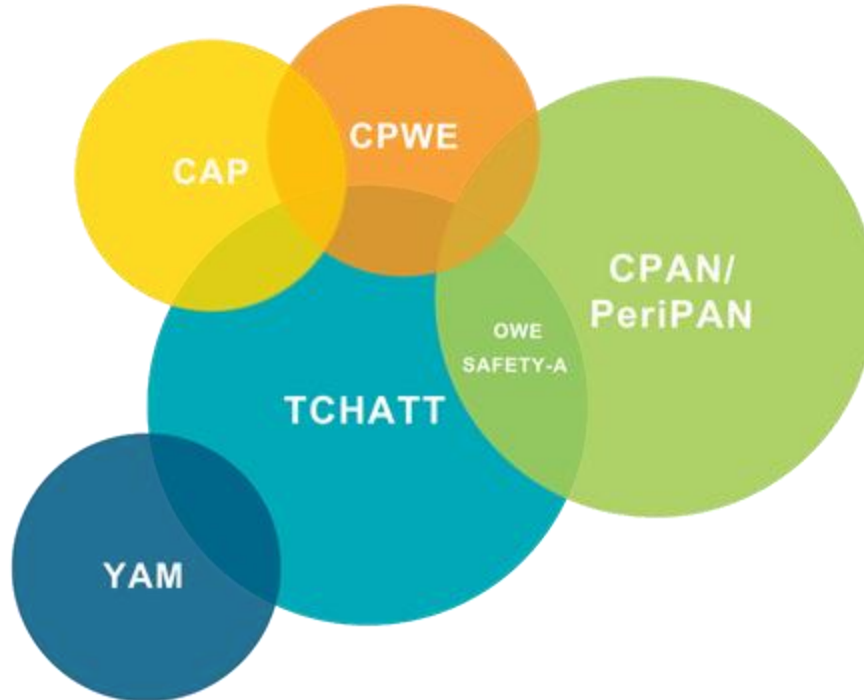
Overview

- Integrated Teams
- CAP Involvement Across Teams
- Integrated Workflows
- Recap

Integration Overview



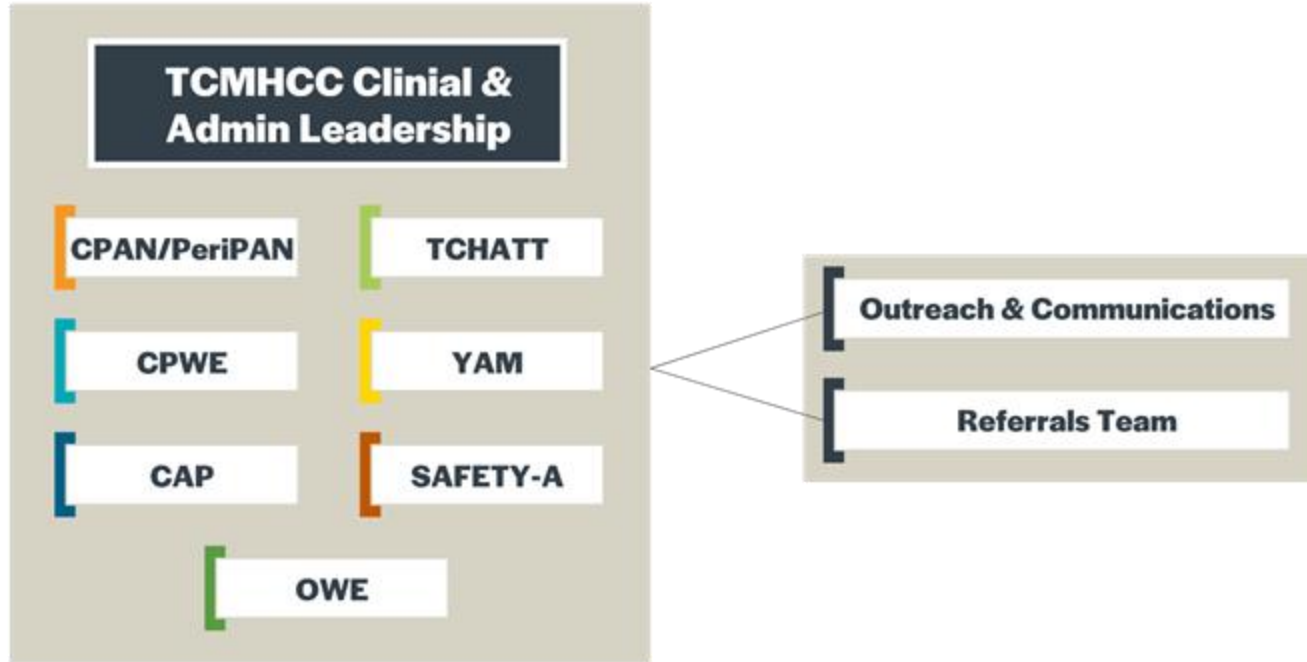
Integration Across Clinical Programs





Integrated Teams

Organizational Structure



Outreach and Communications

- Collaborative Outreach
 - Centralized primary contacts for all programs
 - Cross-trained on multiple programs
 - Integrated outreach education in all settings (school, clinics, community programs and providers)
 - Promotional items

Referrals Team





CAP Involvement Across Teams

CAPs & Cross-Program Coverage

CAPs are providing services across programs:

CAP Role	CPAN	TCHATT	CPWE	Hospital Based Clinic
CAP 1	●	●		
CAP 2**		●	●	
CAP 3	●	●		
CAP 4			●	●
CAP 5	●	●		●
CAP 6	●	●		●
CAP 7		●	●	
CAP 8*		●		

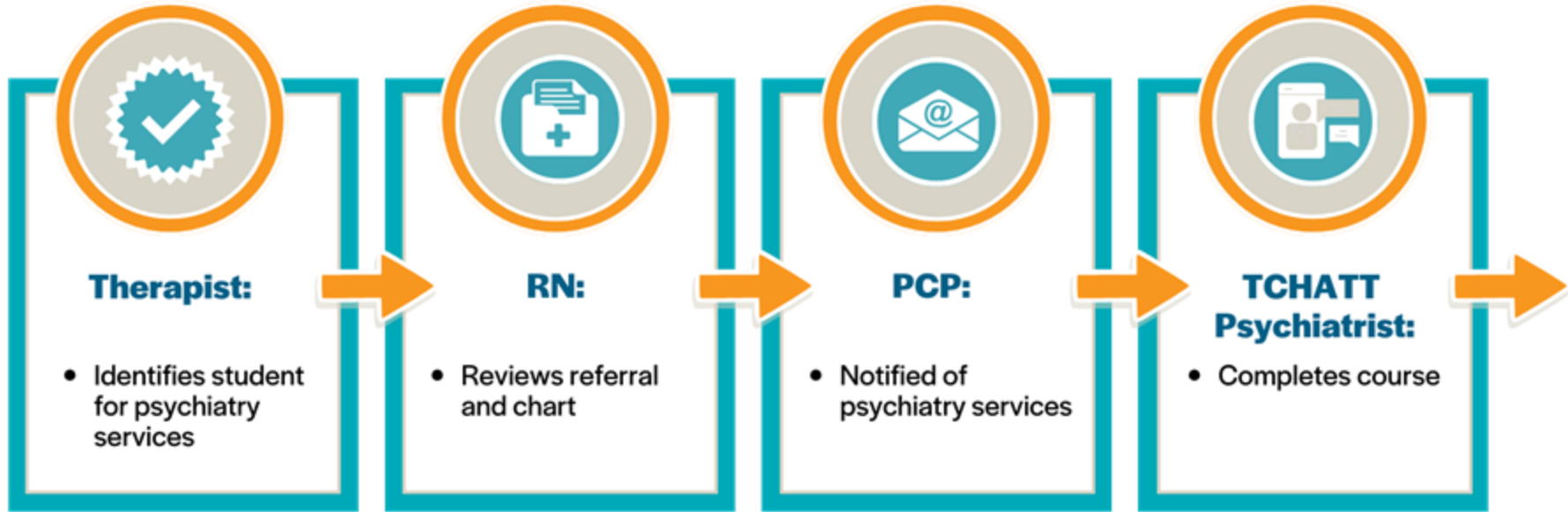
**Associate Program Director

*Program Director

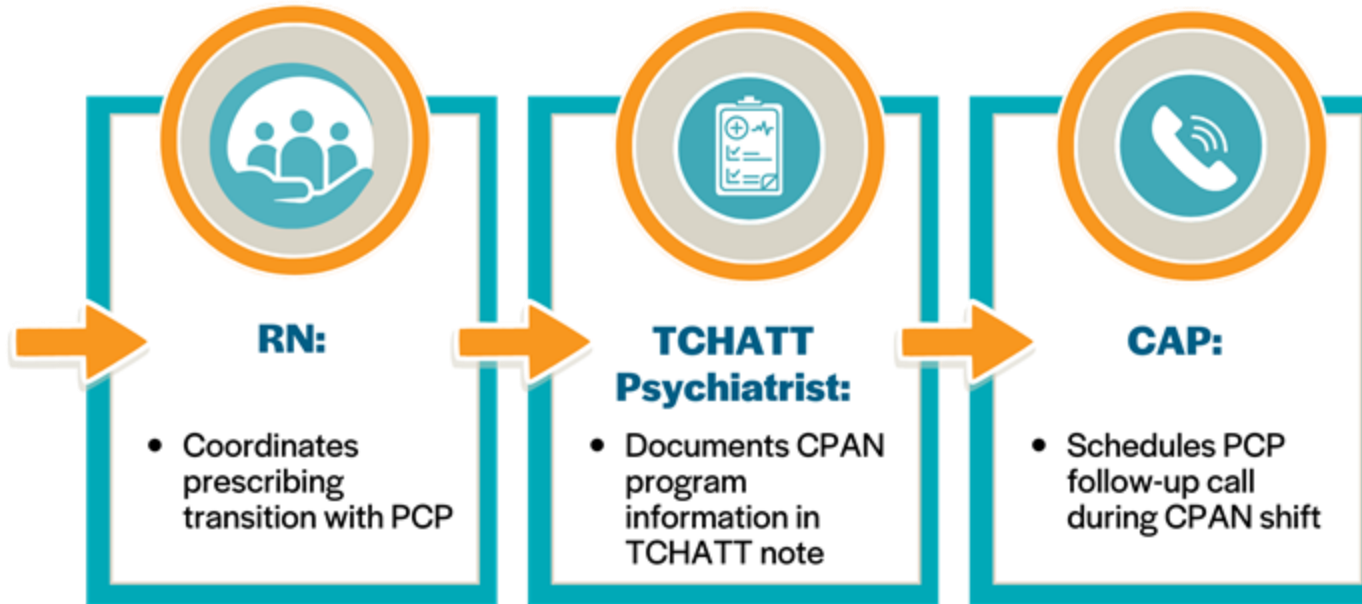


Integrated Workflows

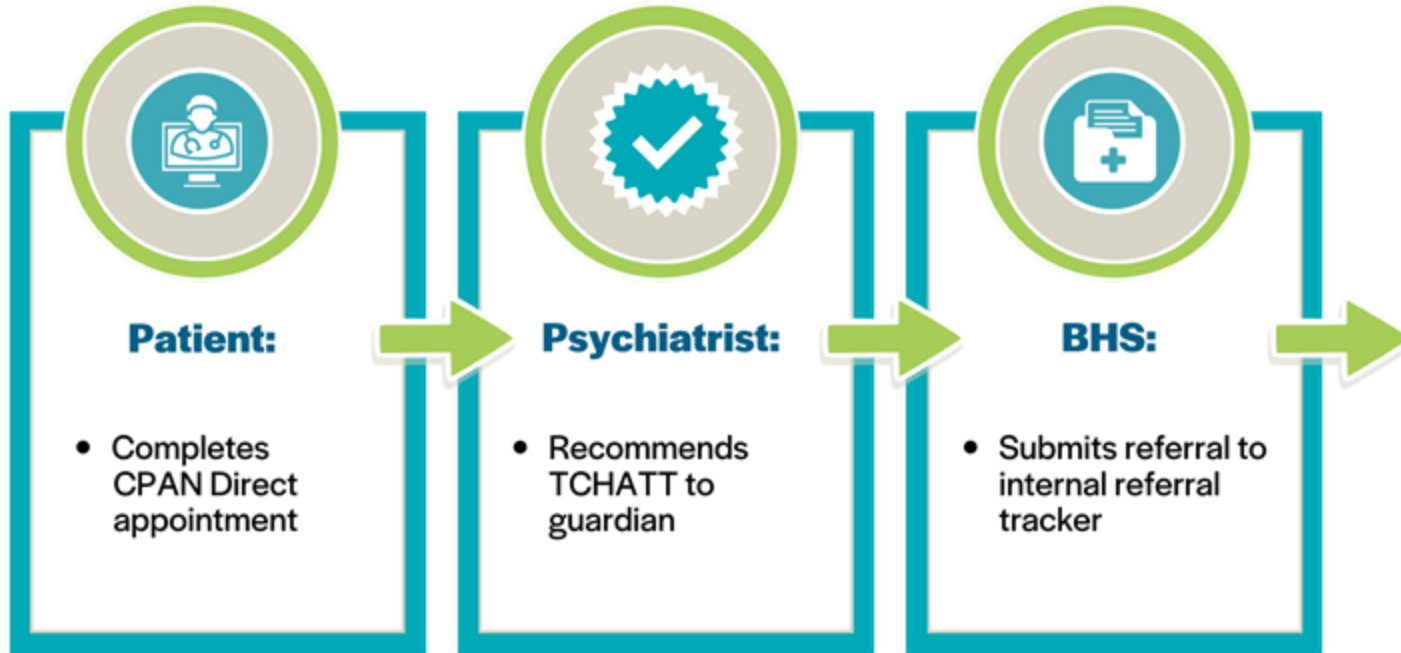
TCHATT → CPAN, Part 1/2



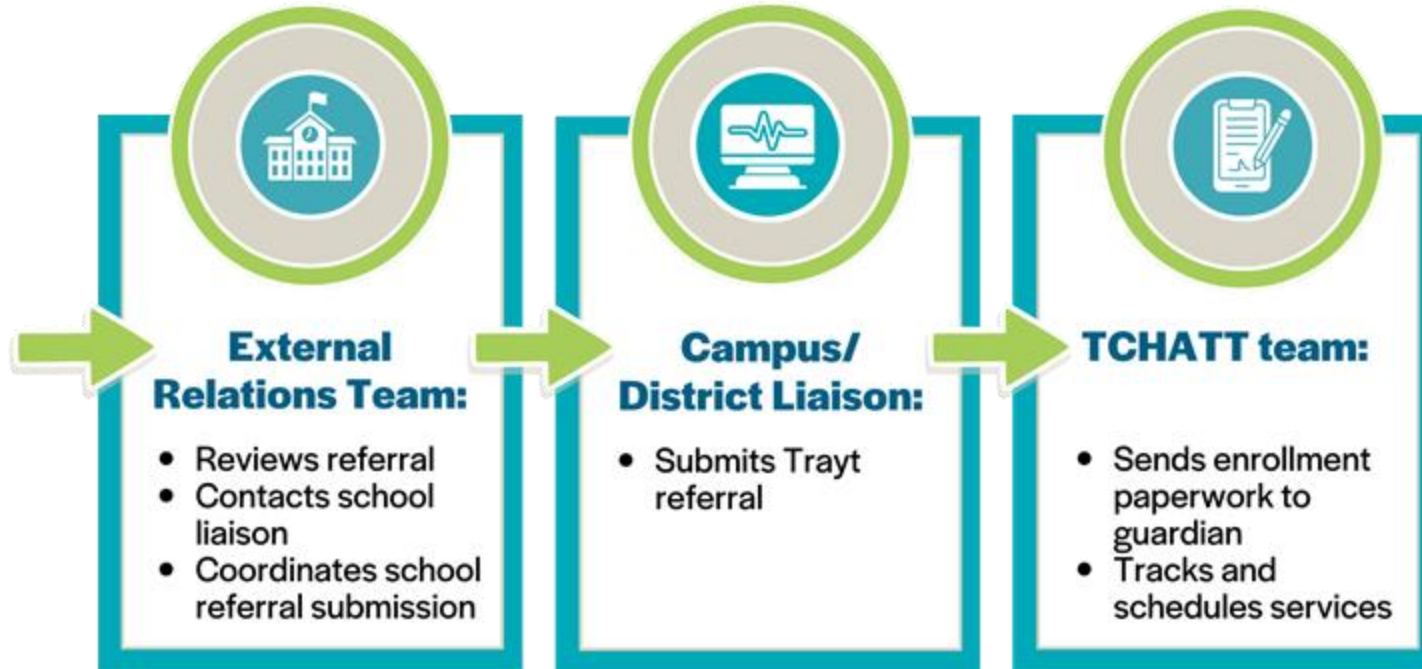
TCHATT → CPAN, Part 2/2



CPAN → TCHATT, Part 1/2

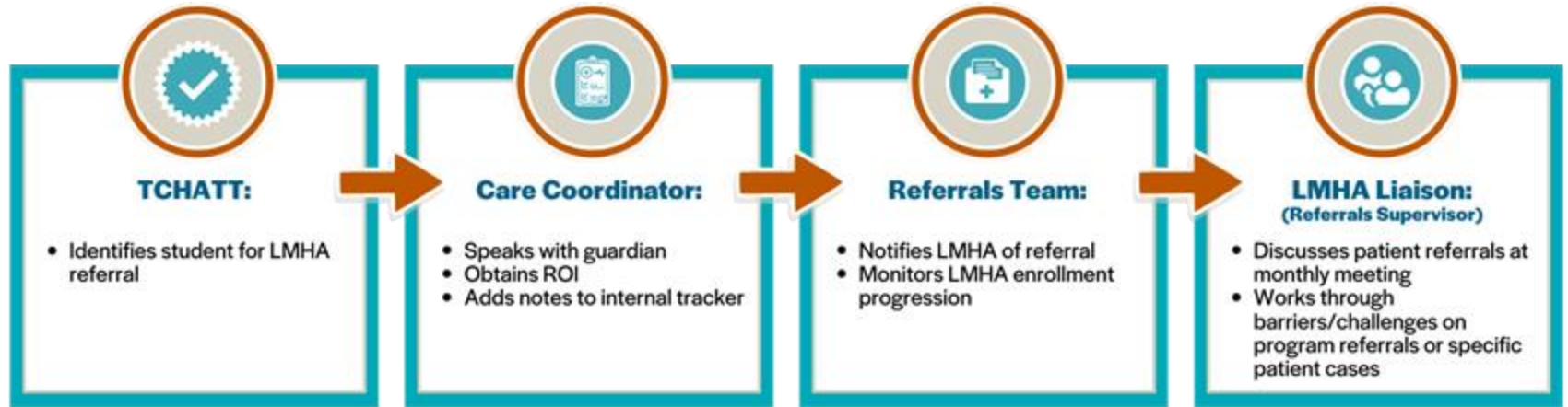


CPAN → TCHAT, Part 2/2



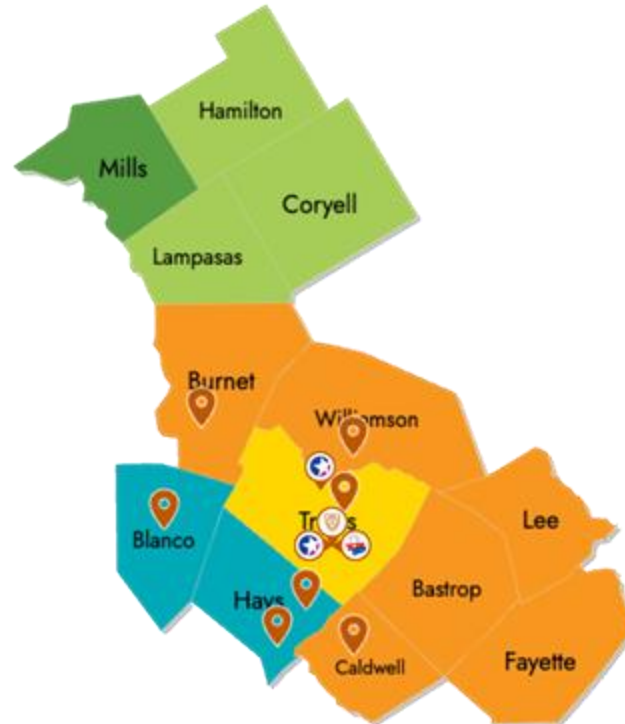
TCHATT → CPWE

- Service Agreements between TCHATT and LMHAs.
- While the referral process for each LMHA varies slightly, the overall processes share many similarities.



TCMHCC and Hospital Based Clinic

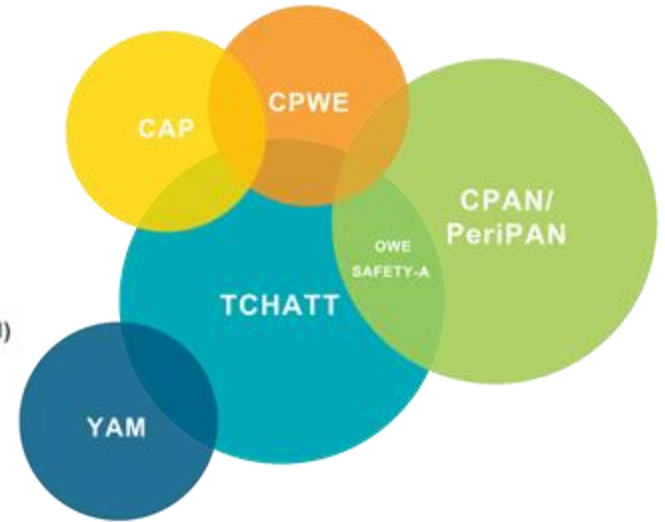
- Bluebonnet Trails
- Center for Life Resources
- Central Counties
- Hill Country MHDD
- Integral Care
- CPAN/PeriPAN and TCHAT
- Dell Children's Hospital/
Dell Children's Medical Center North Campus
- Dell Med LMHA Clinic
- Dell Medical School





Recap

Recap



Questions?
