



**tcmhcc**  
Texas Child Mental  
Health Care Consortium

# Data Dissemination and Publication Committee

*Steven R. Pliszka, MD*

*Chair – TCMHCC Data Dissemination and Publication Committee*

*Professor Emeritus of Psychiatry*

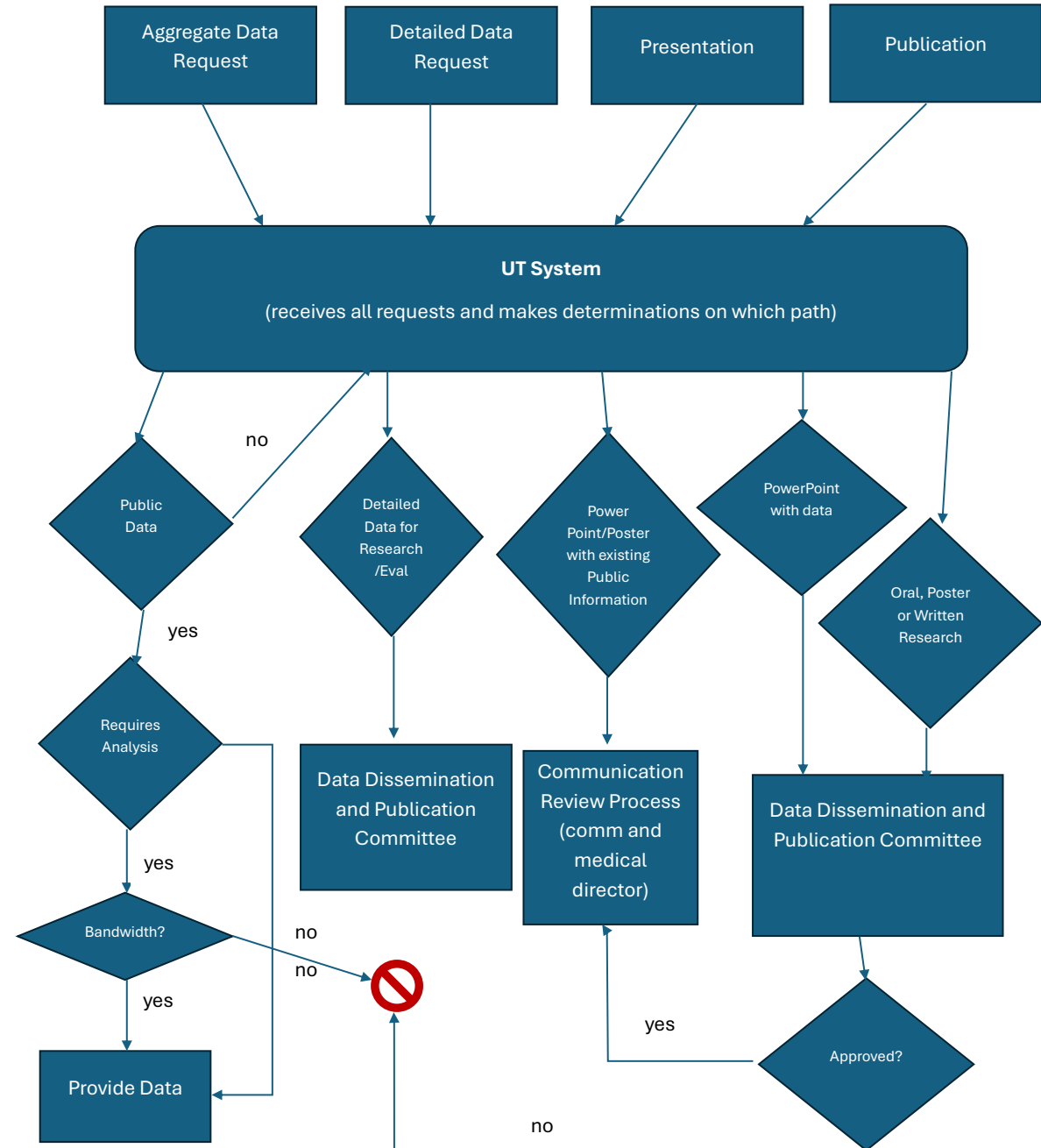
*Department of Psychiatry and Behavioral Sciences*

*Joe R and Theresa Long Lozano School of Medicine*

*UT Health San Antonio*

*Last updated 11/2024*

# Data, Presentation and Publication Request Process



Item	Past Data Committee Document	Current Data Committee Document
Date Finalized	6/29/2021	5/2025
Scope of Work	<ol style="list-style-type: none"> <li>1. EC Advisement*</li> <li>2. Data Governance and Policies*</li> <li>3. All data modification requests associated with TCMHCC data collection (Trayt, Welnity, etc.)*</li> <li>4. TCMHCC Data Requests</li> <li>5. TCMHCC Data Publications</li> </ol>	<ol style="list-style-type: none"> <li>1. TCMHCC Data Requests</li> <li>2. TCMHCC Data Publications</li> </ol>
Committee Membership	<p>Voting: Representatives from each HRI in attendance and chair vote. No requirements related to data expertise. Total of 12 members (excluding chairs).</p> <p>Non-Voting: Representatives from COSH, Internal Evaluation, External Evaluation, vendors for data collection, and UT System</p>	<p>Voting: Elected TCMHCC members/staff with expertise requirements. Total of 7 members (including chair)</p> <p>Non-Voting: Representatives from COSH, Internal Evaluation, External Evaluation, and UT System. If request associated with specific program, it's Medical Director will be invited to provide input. Other SMEs can be invited to meetings.</p>
Member Terms	Indefinite	<p>Chair: 1<sup>st</sup> term - 2 years. Potential for 2 additional reappointments of 2 years.</p> <p>Other voting members: 1<sup>st</sup> term – 2-3 years. Potential for 2 additional reappointments of 2 years.</p>
Process	Submission of data modification/data request/publication request to committee request->feedback/discussion->decision	Submission of specific request forms -> review of request forms prior to meeting->feedback/discussion->decision
Minimum Expectations to Continue Serving on Committee	none	Active participation and attendance of at least 75% of scheduled meetings.

*\*items are handled through a process outside of the data committee.*



**tcmhcc**  
Texas Child Mental  
Health Care Consortium

# Discussion and Vote