



tcmhcc
Texas Child Mental
Health Care Consortium

UT Southwestern
Medical Center

TCMHCC Updates at UT Southwestern

James D Norcross, MD

Professor

Chief, Division of Child and Adolescent Psychiatry

Chief, Texas Child Mental Health Care Consortium Programs at UTSW

Triple Board Training Program

Goal – to train physician leaders to treat and advocate for the most complex child and adolescent patients with co-occurring physical and mental health problems



tcmhcc
Texas Child Mental
Health Care Consortium

UTSouthwestern
Medical Center



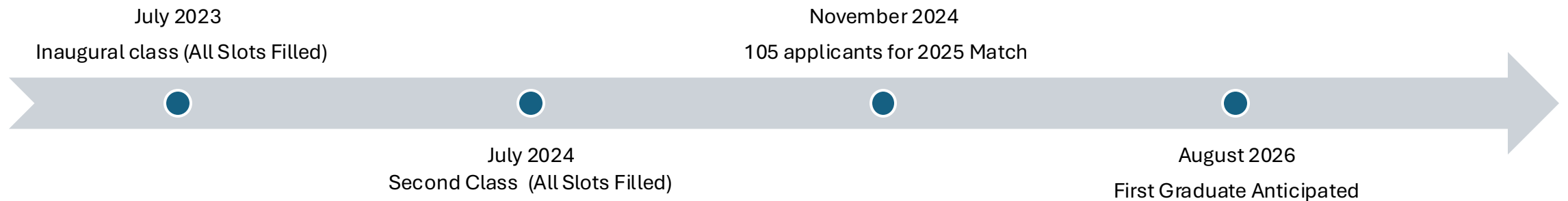
Pediatrics
24 months

**Child and
Adolescent
Psychiatry**
18 months

Psychiatry
18 months

Triple Board Training Program

- Only eleven programs nationally
- Four slots per year (largest program in US)
- Graduates are Board Eligible in all three specialties at completion
- Partial Funding from both TCMHCC and THECB



Triple Board Training Program



UTSouthwestern
Medical Center

Leadership: Training Director:
Kathlene Trello-Rishel, MD

Associate Training Director:
Eric Shute, MD

Program Coordinator:
Cheree Nishiyama

Psychiatry Vice Chair, Education –
Adam Brenner, MD

Pediatric Vice Chair, Education-
Jeffrey McKinney, M.D., Ph.D.

Child and Adolescent Community Psychiatry Fellowship

Goal – to train physicians to address the mental health needs of underserved youth and families with additional exposure to community engagement and partnership



tcmhcc
Texas Child Mental
Health Care Consortium

UTSouthwestern
Medical Center



One position in The Match to start in July 2025



Emphasis on Community Psychiatry with ambulatory psychiatry experience to be done with CPWE partners



Planned for 2026, inpatient and partial hospitalization rotations to be done at the North Texas Behavioral Health Center



Training Director: Kathlene Trello-Rishel, MD
Program Coordinator: Melody Lundquist

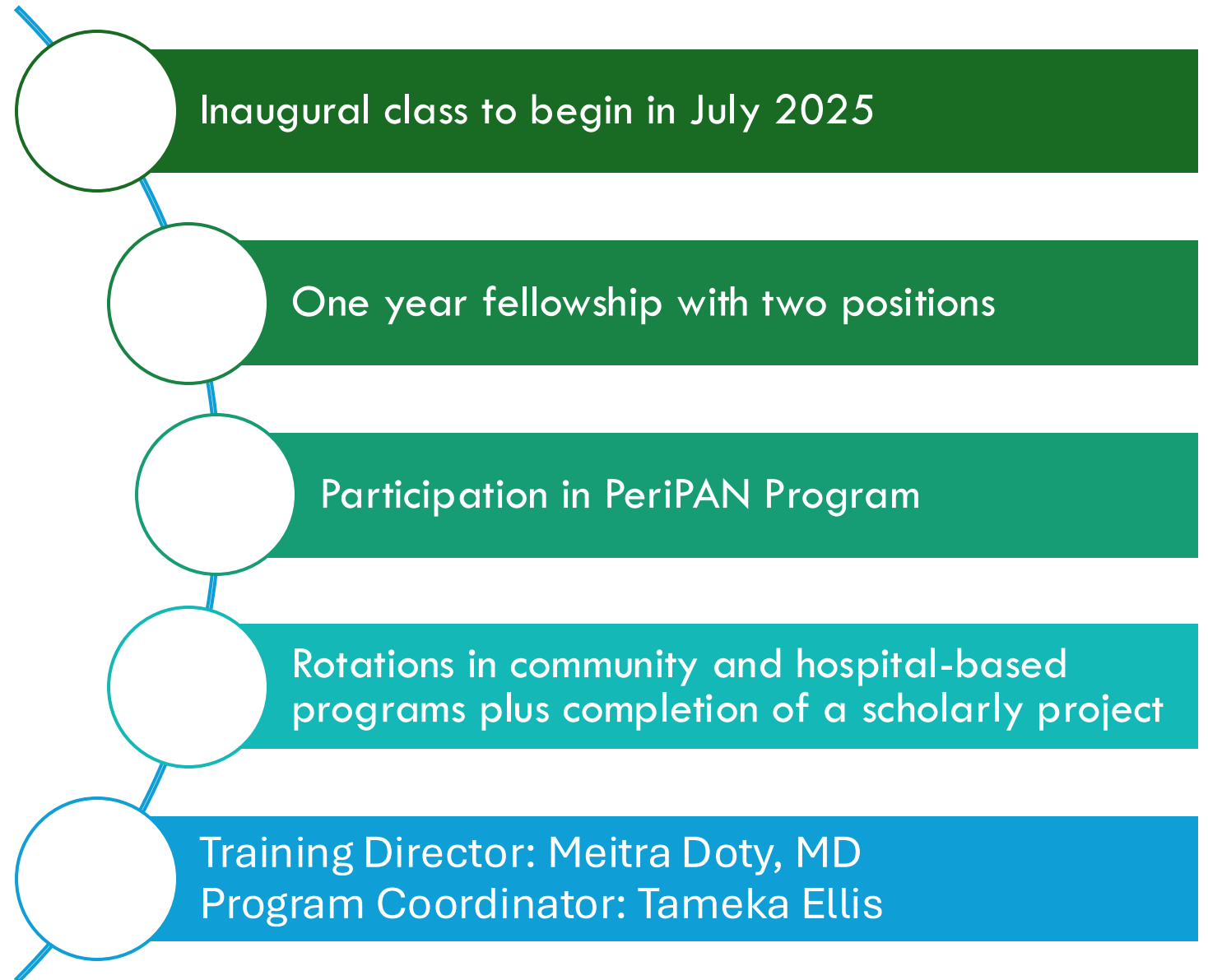
Women's Mental Health Fellowship

Goal – provide expertise in treating perinatal psychiatric disorders, trauma related disorders, substance use disorders and eating disorders as they relate to women's mental health



tcmhcc
Texas Child Mental
Health Care Consortium

UTSouthwestern
Medical Center



HRI coverage support

TCHATT February through July 2024

CPWE to begin in January 2025



UTSouthwestern
Medical Center

TCHATT

- Resource coordination with Local HRI's Case Management Teams and UTSW Therapists
- UTHSCSA - 19 referrals completed
- UTRGV – 88 referrals completed

CPWE

- UTRGV – Virtual staffing and supervision at Border Region Behavioral Health Center in Laredo